



KINGDOM OF ESWATINI
MINISTRY OF HEALTH

Sexually Transmitted Infections

Male Urethral Syndrome



Male Urethral Syndrome

A penile discharge, is the abnormal loss of fluid that is not urine or semen from the urethra at the tip of the penis. The discharge can vary in amount from scanty to profuse. Can also vary in colour from thick clear, to yellowish or green. The frequency of the discharge can vary with individuals.

Transmission

- It is transmitted through unprotected sexual intercourse: (vaginal, anal or orally).

Symptoms

- Discharge from the urethra, painful and frequent urination
- Redness or swelling around the urethra and testicle

Health Promotion Package

- Educate, ensure compliance, and counsel on treatment.
- Promote abstinence or condom use during treatment.
- Provide, promote correct and consistent condom and lubricants use.
- Issue notification slip for each sexual partner and emphasize the importance of partner treatment
- And continue to make follow up of partner treatment during review visits.
- Offer HIV counselling and testing, as per National Integrated Management HIV Guidelines.
- Offer Pre exposure prophylaxis as per guidelines
- Offer voluntary medical male circumcision
- Provide cervical and prostate cancer screening at first contact or follow-up visit.

Complications

- Scrotal swelling
- Infertility
- Eye infection due to poor hygiene

Vaginal Discharge Syndrome



Vaginal Discharge Syndrome

An abnormal vaginal discharge which can indicate an infection.
The abnormal discharge may be chunky in consistency.

Transmission

- It's commonly spread through unprotected sexual intercourse.

Symptoms

- Bleeding associated with vaginal intercourse
- Painful or burning sensations when urinating
- Yellow or bloody vaginal discharge, with a foul smell

Health Promotion Package

- Educate, ensure compliance, and counsel on treatment.
- Promote abstinence or condom use during treatment.
- Provide, promote correct and consistent condom and lubricants use.
- Issue notification slip for each sexual partner and emphasize the importance of partner treatment
- And continue to make follow up of partner treatment during review visits.
- Offer HIV counselling and testing, as per National Integrated Management HIV Guidelines.
- Offer Pre exposure prophylaxis as per guidelines.
- Offer voluntary medical male circumcision to uncircumcised male partners
- Provide cervical and prostate cancer screening at first contact or follow-up visit.

Complications

- Pelvic inflammatory diseases
- Neonatal conjunctivitis
- Ectopic pregnancy
- Infertility
- In rare cases there may be bloodstream infection causing inflammation of joints.

Genital Ulcers



Genital Ulcers

These are sores may be found on the genitals. They can also be found in the anus and orally or on the skin around it. They may be painful, bleed

Transmission

- It's commonly spread through unprotected sexual intercourse.

Symptoms

- Ulcer or sore or blisters
- Swollen lymph nodes
- Pain on buttocks, or genital area
- Pain or itching during urination

Health promotion package

- Educate, ensure compliance, and counsel on treatment.
- Promote abstinence or condom use during treatment.
- Provide, promote correct and consistent condom and lubricants use.
- Issue notification slip for each sexual partner and emphasize the importance of partner treatment
- And continue to make follow up of partner treatment during review visits.
- Offer HIV counselling and testing, as per National Integrated Management HIV Guidelines.
- Offer Pre exposure prophylaxis as per guidelines.
- Offer voluntary medical male circumcision to uncircumcised male partners
- Provide cervical and prostate cancer screening at first contact or follow-up visit.

Complications

- Still birth, New-born infection
- Bladder problems, meningitis,
- Rectal inflammation (proctitis)

Genital Herpes



Genital Herpes

Genital blisters or sores usually found in the penis, vagina and the mouth.

Transmission

- Sexual contact is the primary way that the virus spreads. May also be transmitted at birth to new born
- After the initial infection, the virus lies dormant in your body and can reactivate several times a year

Symptoms

- Prodrome pain
- Tiny single or clustered whitish blisters.
- Pain or itching, ulcers and/or sores.

Health Promotion Package

- Educate, ensure compliance, and counsel on treatment.
- Promote abstinence or condom use during treatment.
- Provide, promote correct and consistent condom and lubricants use.
- Issue notification slip for each sexual partner and emphasize the importance of partner treatment
- And continue to make follow up of partner treatment during review visits.
- Offer HIV counselling and testing, as per National Integrated Management HIV Guidelines.
- Offer Pre exposure prophylaxis as per guidelines
- Offer voluntary medical male circumcision and to uncircumcised male partners
- Provide cervical and prostate cancer screening at first contact or follow-up visit.

Complications

- Increase chances of HIV
- Can be transmitted to New-borne causing (Herpes Ecephalitis)
- Rectal inflammation

Genital Warts



Genital Warts

These are fibrous overgrowths covered by a thickened, outer layer. They can appear around genital, oral and anal areas

Transmission

- It's commonly spread through unprotected sexual intercourse.

Symptoms

- Small, flesh-coloured or gray swellings in your genital area
- Several warts close together that take on a cauliflower-like shape
- Itching or discomfort in your genital area and bleeding with intercourse
- Complications
Cancer of the cervix, vulva, anus and penis

Health Promotion Package

- Educate, ensure compliance, and counsel on treatment.
- Promote abstinence or condom use during treatment.
- Provide, promote correct and consistent condom and lubricants use.
- Issue notification slip for each sexual partner and emphasize the importance of partner treatment
- And continue to make follow up of partner treatment during review visits.
- Offer HIV counselling and testing, as per National Integrated Management HIV Guidelines.
- Offer Pre exposure prophylaxis as per guidelines
- Offer voluntary medical male circumcision and to uncircumcised male partners
- Provide cervical and prostate cancer screening at first contact or follow-up visit.

Complications

- May ulcerate and be super infected making it difficult to manage
- Cancer of the prostate, cervix and anus

Inguinal Bubo



Inguinal Bubo

These are localized enlargements of the lymph nodes in the groin or any affected area, which are painful and may be fluctuant

Transmission

- It's commonly spread through unprotected sexual intercourse
- The organism travels from the site of inoculation down the lymphatic channels to multiply within mononuclear phagocytes of the lymph nodes it passes.

Symptoms

- Swelling of lymph nodes in groin area, painful or painless
- Bubo implies that there is swollen nodes filled with or draining pus
- Fever, chills, headache, anorexia, and myalgia.
- unilateral lymphadenitis

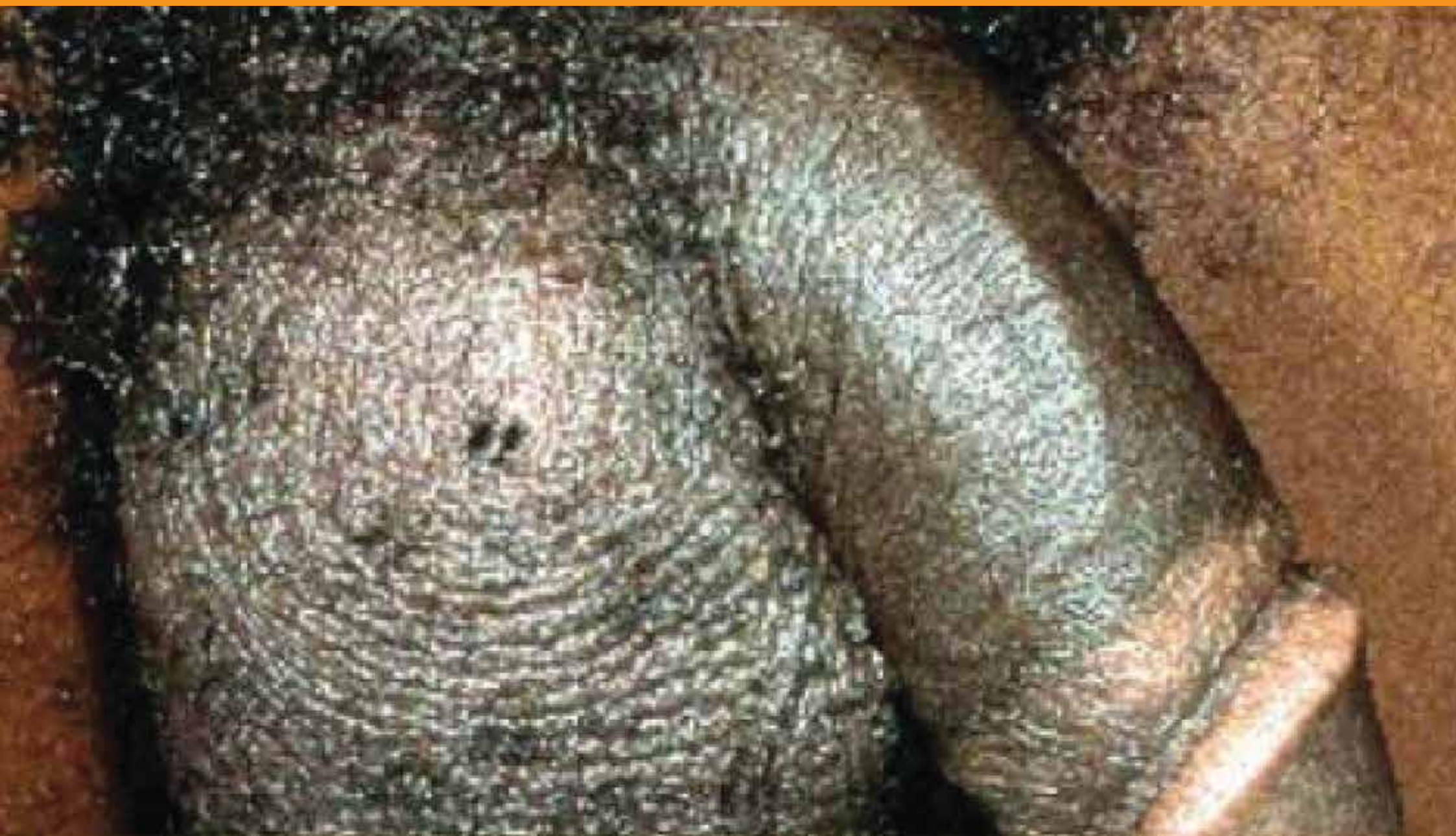
Health Promotion Package

- Educate, ensure compliance, and counsel on treatment.
- Promote abstinence or condom use during treatment.
- Provide, promote correct and consistent condom and lubricants use.
- Issue notification slip for each sexual partner and emphasize the importance of partner treatment
- And continue to make follow up of partner treatment during review visits.
- Offer HIV counselling and testing, as per National Integrated Management HIV Guidelines.
- Offer Pre exposure prophylaxis as per guidelines
- Offer voluntary medical male circumcision and to uncircumcised male partners
- Provide cervical and prostate cancer screening at first contact or follow-up visit.

Complications

- Sinuses
- Fistula especially in the anal area
- disfigurement

Scrotal Swelling



Scrotal Swelling

Inflammation of the epididymis usually manifests itself by acute onset of unilateral testicular pain and swelling. Inguinal and femoral buboes are much enlarged and often pus-filled lymph nodes in the groin region. A bubo may occur in chancroid and chlamydia primary infection.

Transmission

- It's commonly spread through unprotected sexual intercourse

Symptoms

- Swollen scrotum
- Lump and pain in the testicles or scrotum.

Health Promotion Package

- Educate, ensure compliance, and counsel on treatment.
- Promote abstinence or condom use during treatment.
- Provide, promote correct and consistent condom and lubricants use.
- Issue notification slip for each sexual partner and emphasize the importance of partner treatment
- And continue to make follow up of partner treatment during review visits.
- Offer HIV counselling and testing, as per National Integrated Management HIV Guidelines.
- Offer Pre exposure prophylaxis as per guidelines
- Offer voluntary medical male circumcision and to uncircumcised male partners
- Provide cervical and prostate cancer screening at first contact or follow-up visit.

Complications

- Infection or tumors
- reduced sperm production or
- function and inguinal hernia

Pubic Lice



Pubic Lice

Lice infestation that is caused by the pubic louse found in the genital area (phthirus pubis)

Transmission

- It's commonly spread through unprotected sexual intercourse.

Symptoms

- Severe itching around the pubic area
- Scratching of affected area
- The scratch markings on the skin around the affected area
- lice and nits remain mostly confined to pubic and peri-anal areas

Health Promotion Package

- Educate, ensure compliance, and counsel on treatment.
- Promote abstinence or condom use during treatment.
- Provide, promote correct and consistent condom and lubricants use.
- Issue notification slip for each sexual partner and emphasize the importance of partner treatment.
- And continue to make follow up of partner treatment during review visits.
- Offer HIV counselling and testing, as per National Integrated Management HIV Guidelines.
- Offer Pre exposure prophylaxis as per guidelines.
- Offer voluntary medical male circumcision and to uncircumcised male partners.
- Provide cervical and prostate cancer screening at first contact or follow-up visit.

Complications

- The lice and nits may spread to other hairy areas in the body
- Secondary infection of affected areas with impetigo or any other bacterial skin condition (boils or furunculosis)

Neonatal Conjunctivitis



Neonatal Conjunctivitis

It's an eye infection on babies by Mothers who had either N. gonorrhoeae and C. trachomatis infection.

Transmission

- Neonate are infected during vaginal delivery by infected mother.

Symptoms

- Eyes Redness
- Swelling of eyelids
- Eye discharge

Health Promotion Package

- Educate, ensure compliance, and counsel on treatment.
- Promote abstinence or condom use during treatment.
- Provide, promote correct and consistent condom and lubricants use.
- Issue notification slip for each sexual partner and emphasize the importance of partner treatment.
- And continue to make follow up of partner treatment during review visits.
- Offer HIV counselling and testing, as per National Integrated Management HIV Guidelines.
- Offer Pre exposure prophylaxis as per guidelines.
- Offer voluntary medical male circumcision and to uncircumcised male partners.
- Provide cervical and prostate cancer screening at first contact or follow-up visit.

Complications

- Corneal opacification
- Peripheral pannus formation
- Staphyloma
- Blindness
- Loss of eye

Neonate with congenital syphilis



Neonate with congenital syphilis

It is a multisystem infection due to syphilis infection transmitted during pregnancy from mother to fetus

Transmission

- Treponema pallidum transmitted to the fetus via the placenta.

Symptoms

- Marcerated baby
- lymphadenopathy, hepatosplenomegaly
- failure to thrive
- blood-stained nasal discharge
- perioral fissures

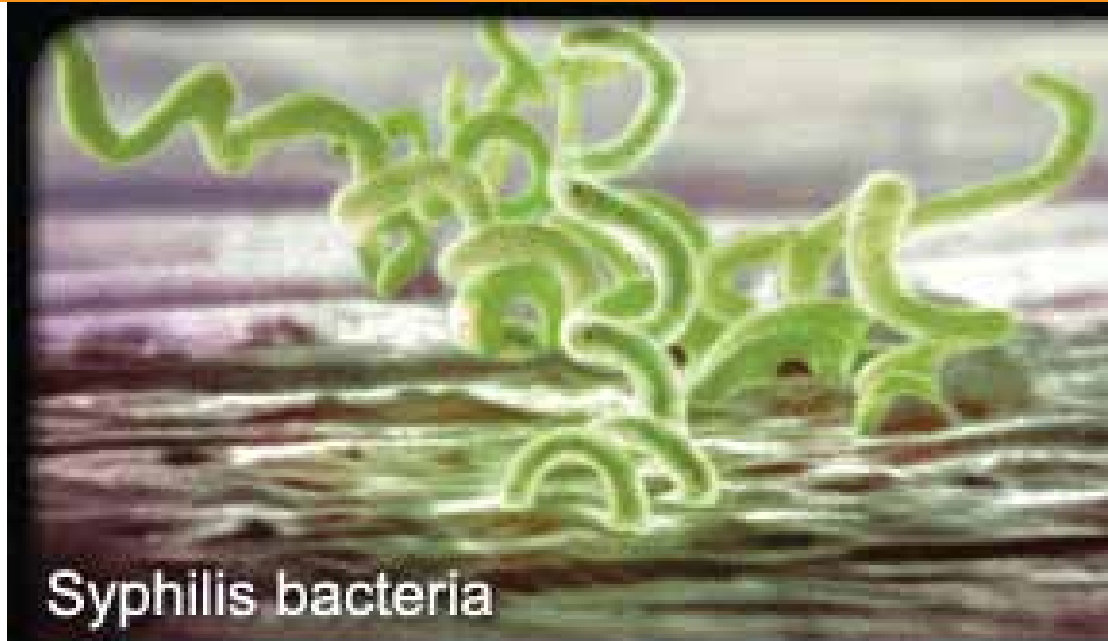
Health Promotion Package

- Educate, ensure compliance, and counsel on treatment.
- Promote abstinence or condom use during treatment.
- Provide, promote correct and consistent condom and lubricants use.
- Issue notification slip for each sexual partner and emphasize the importance of partner treatment.
- And continue to make follow up of partner treatment during review visits.
- Offer HIV counselling and testing, as per National Integrated Management HIV Guidelines.
- Offer Pre exposure prophylaxis as per guidelines.
- Offer voluntary medical male circumcision and to uncircumcised male partners.
- Provide cervical and prostate cancer screening at first contact or follow-up visit.

Complications

- Meningitis, Choroiditis and Hydrocephalus,
- Intellectual disability,
- Osteochondritis, and pseudo-paralysis.

syphilis



syphilis

Bacterial infection which manifest with a painless lesion (chancre) on the affected is self-limiting.

Transmission

- It's commonly spread through unprotected sexual intercourse.

Symptoms

Primary lesions:

- Pain less sore that last 2 to 6 weeks

Secondary lesions:

- Skin lesions on palms and sole may also be generalized, usually does not itch.
- Swollen glands, headache, and muscle aches.
- Weight or hair loss. May be on an off for a period of 2 years

Late stage:

- There are no signs or symptoms at all for months or even years, but you still need treatment to get rid of it.
- Late stages of syphilis can cause tumours, blindness, and paralysis.
- Gummous ulcers, periosteal lesions, paresis, tabs, optic atrophy, interstitial keratitis, sensorineural deafness, and dental deformities.

Health Promotion Package

- Educate, ensure compliance, and counsel on treatment.
- Promote abstinence or condom use during treatment.
- Provide, promote correct and consistent condom and lubricants use.
- Issue notification slip for each sexual partner and emphasize the importance of partner treatment.
- And continue to make follow up of partner treatment during review visits.
- Offer HIV counselling and testing, as per National Integrated Management HIV Guidelines.
- Offer Pre exposure prophylaxis as per guidelines.
- Offer voluntary medical male circumcision and to uncircumcised male partners.
- Provide cervical and prostate cancer screening at first contact or follow-up visit.

Complications

- It can damage your nervous system, brain and other organs, and may even kill you